



Ruby Filter GEM® Trap

Flanged Line Drainage Venturi Orifice Steam Trap. Rev 3 Oct 2012

The GEM® Trap

The GEM Trap is a staged venturi orifice steam trap. It has no moving parts so will not wear and cannot fail. The unique venturi orifice technology utilises the expansion of the flash steam created by the pressure differential across the trap to control the flow of condensate.

Operating over variable loads, the GEM Trap will suit all industrial applications. The single piece bodies are manufactured from wear and corrosion resistant grades of stainless steel.

The GEM Trap is the most energy efficient steam trap on the market and is supplied with a 10 year performance guarantee*, and a full sizing and commissioning service.

The Ruby Filter GEM® Trap

- Suitable for all standard PN / ASME flanged applications.
- Operates at high pressures
- Suited for all line drainage and low condensate duty applications.
- Installed between two flanges any face-to-face length can be accommodated with a spool piece.

Ruby Filter Traps contain GEM's inverted cone technology and an integral thimble filter to further protect the orifice from debris.

Suitable Applications

- High pressure applications
- Low condensate duty applications
- Line drainage / trace heating

Operating Parameters

- PMA 100 Bar (1450psi)
- TMA 500°C (930°F)

Maximum temperatures and pressures are subject to the gaskets used in the fittings.

Ancillary Parts

- Insulation Jacket
- Optional 'Y' Strainer



Sizes and Connection Types Available

	PN Flanged	ASME Flanged	RTJ
DN15 / 1/2"	✓	✓	On request
DN20 / 3/4"	✓	✓	On request
DN25 / 1"	✓	✓	On request

Available Spares

- Thimble Filter
- Circlip

Key GEM® Trap Benefits

Quality, Efficiency, Reliability and Service
 > 10 Year performance guarantee*
 > No moving parts to wear or fail
 > No inserts - no leak path
 > No ongoing trap surveys
 > Minimal annual maintenance
 > Does not contribute to waterhammer

> No pressurisation of condensate return system
 > Inherently more efficient than mechanical traps
 > Typical payback < 2 years
 > Permanent energy savings
 > Each traps supplied with full sizing and commissioning service

* Reduced guarantee offered for superheated steam



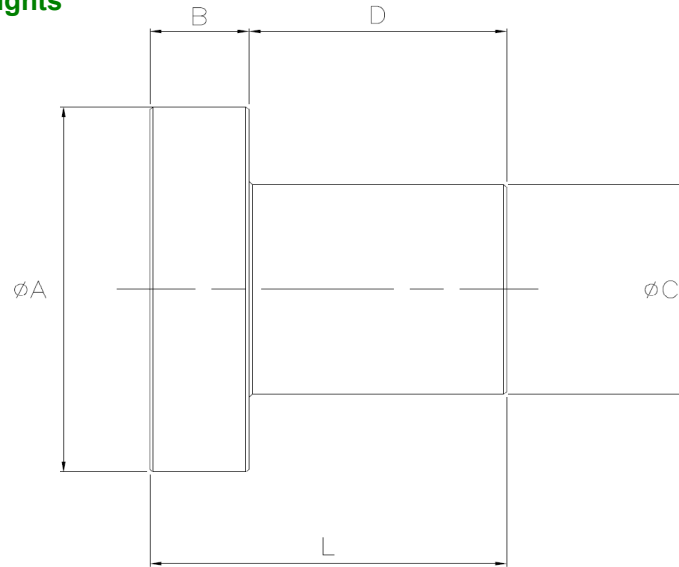
An Innovative Technology Company Providing
 Energy and Emission Reduction Solutions

Thermal Energy International, Inc.
 UK Office:
 1 John Street, Bristol UK BS1 2HR
 e-mail: enq@gemtrap.co.uk
 tel: 0117 917 7010 fax: 0117 917 7011

www.gemtrap.co.uk
 www.thermalenergy.com

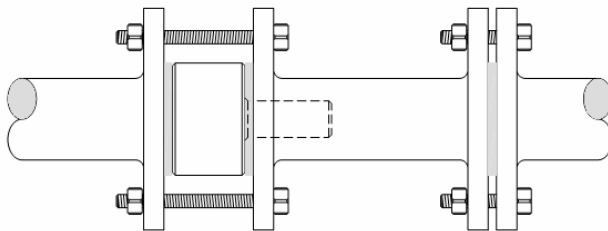


Dimensions and Weights



	Ø A (mm)	B (mm)	Ø C (mm)	D (mm)	L (mm)	Weight (kg)
RF15 (DN15 / ½")	40	26	13	31	57	0.22
RF20 (DN20 / ¾")	50	23	16	42	65	0.35
RF25 (DN25 / 1")	60	23	21	56	78	0.53

Installation Layout



Suitable Pipe Schedules

- > Maximum pipe thickness Schedule 80
- > Please contact the manufacturer for assistance with thicker schedules

Materials

Part	Material
Body	303 Stainless Steel
Thimble Filter Base	304 Stainless Steel ring base
Thimble Filter Mesh	316 Stainless Steel 50 Mesh
Circlip	316 Stainless Steel

- Full product traceability is part of our Quality Assurance procedure
 - Type 3.1 material certification to BS EN 10204:2004 (E)
- All certification/inspection requirements must be stated at time of order placement.*



An Innovative Technology Company Providing Energy and Emission Reduction Solutions

Thermal Energy International, Inc.
 UK Office:
 1 John Street, Bristol UK BS1 2HR
 e-mail: enq@gemtrap.co.uk
 tel: 0117 917 7010 fax: 0117 917 7011

www.gemtrap.co.uk
www.thermalenergy.com